

FOR LEASE

Retail Space
North Austin, Texas



2121 Parmer Lane

Location: Near the intersection of Parmer Lane and Metric Blvd. in North Austin

Size: Suite 112 is 2,160 sq. ft. Chiropractor space
Suite 113 is 2,160 sq. ft. Former Market space
Suite 116 is 2,160 sq. ft. Insurnace office space

Lease Rate: First year rate \$16.50 per sq. ft. plus NNN of \$7.04 Per square foot for year 2019



ROBERT R. HEMPHILL CO.

COMMERCIAL REAL ESTATE

512-474-2224

robertrhemphill@austin.rr.com

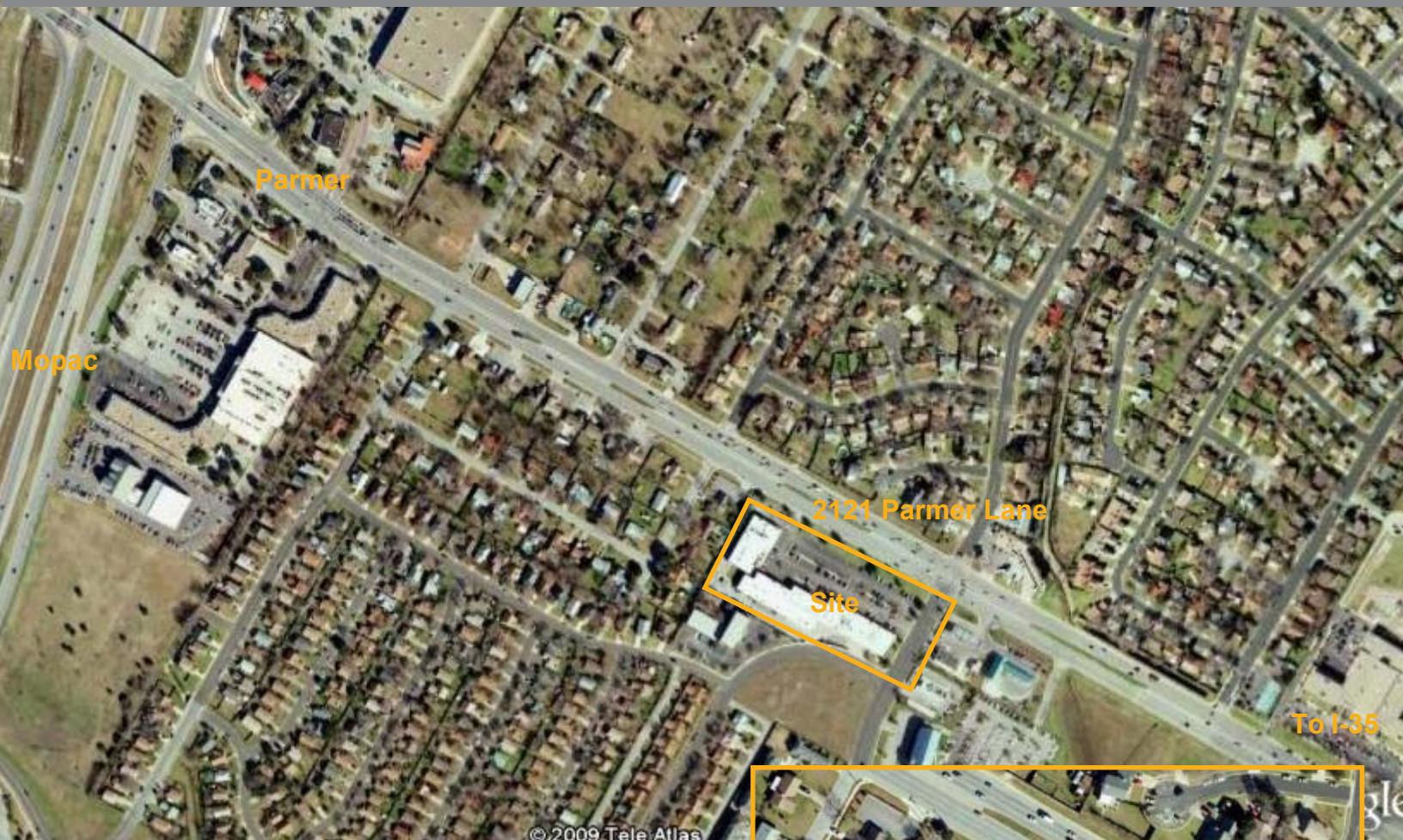
<http://www.weleaseaustin.com/listings.htm>

All information regarding this property is from sources deemed reliable, however, Broker has not made an independent investigation of these sources and no warranty or representation is made by the Broker as to the accuracy thereof and same is submitted subject to errors, omissions, change of price, rental or other conditions, prior sale, lease or withdrawal from market without notice. Broker further has not made and shall not make any warranty or representation as to the condition of the property nor the presence of any hazardous substances or any environmental or other conditions that may affect the value or suitability of the property.

1300 West Lynn, Suite 108, Austin, Texas 78703, (512) 474-2224 fax: (512) 474-4224

FOR LEASE

Retail Space
North Austin, Texas



2121 Parmer Lane

Availability: Immediate

Location: Near the intersection of Parmer Lane and Metric Blvd in North Austin

Size: Suites sizes available from 2,160 sq. ft. -to 4,320 sq. ft.

Lease Rate: First year rate \$16.50 per sq. ft. Plus \$7.05 NNN for year 2019



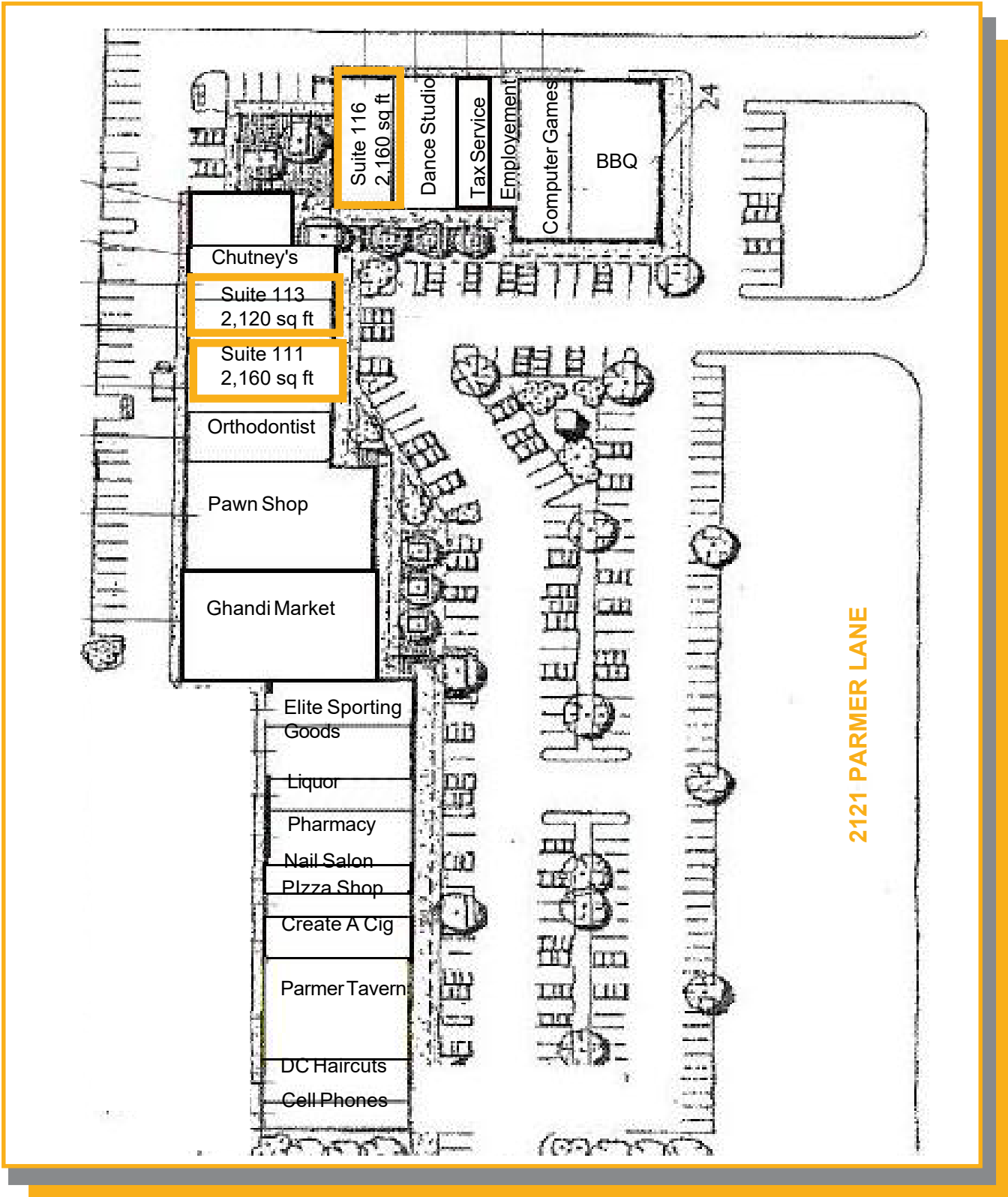
robertrhemphill@austin.rr.com
<http://www.welaseaustin.com/listings.htm>

All information regarding this property is from sources deemed reliable, however, Broker has not made an independent investigation of these sources and no warranty or representation is made by the Broker as to the accuracy thereof and same is submitted subject to errors, omissions, change of price, rental or other conditions, prior sale, lease or withdrawal from market without notice. Broker further has not made and shall not make any warranty or representation as to the condition of the property nor the presence of any hazardous substances or any environmental or other conditions that may affect the value or suitability of the property.

1300 West Lynn, Suite 108, Austin, Texas 78703, (512) 474-2224 fax: (512) 474-4224

FOR LEASE

Retail Space
North Austin, Texas



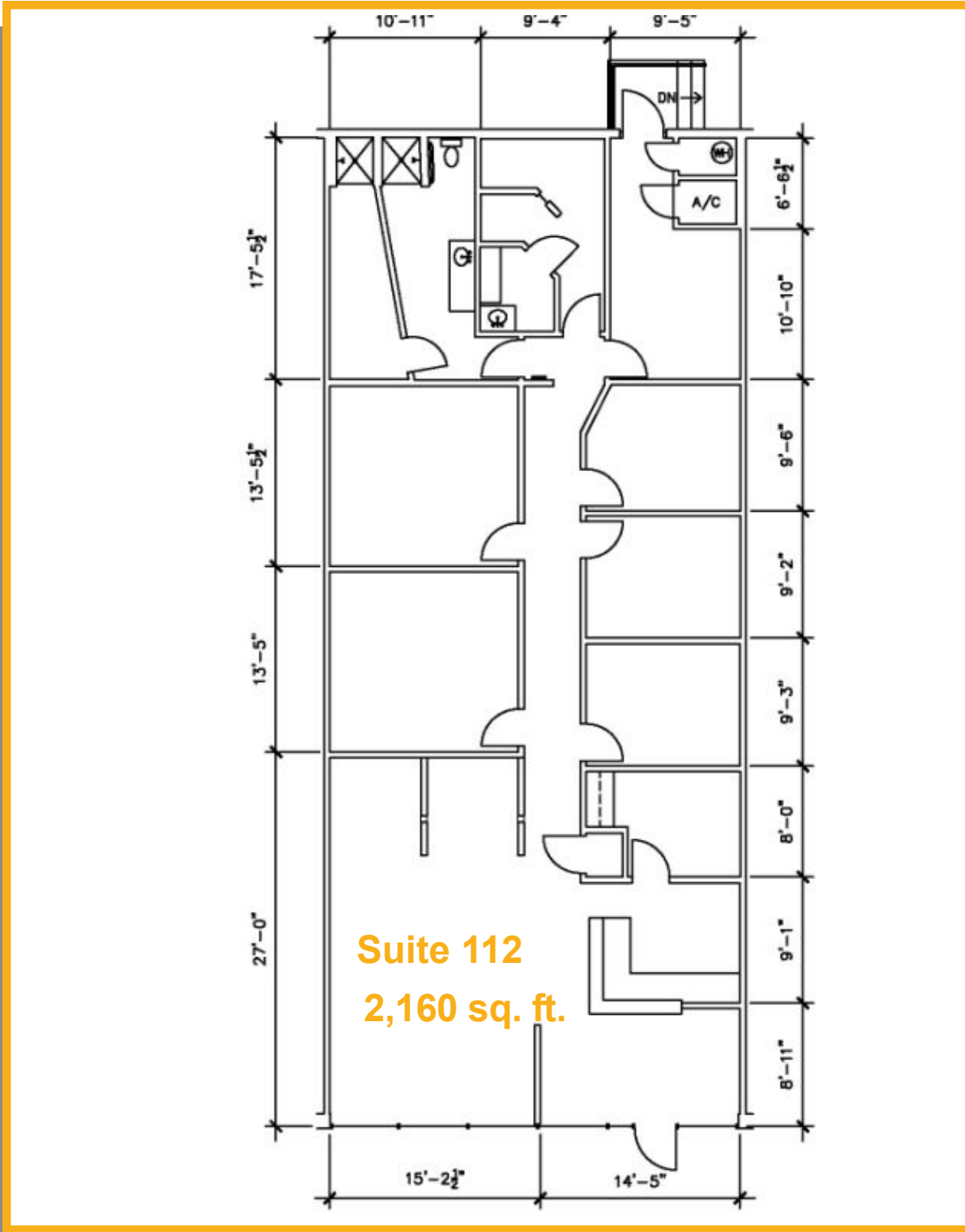
2121 PARMER LANE

All information regarding this property is from sources deemed reliable, however, Broker has not made an independent investigation of these sources and no warranty or representation is made by the Broker as to the accuracy thereof and same is submitted subject to errors, omissions, change of price, rental or other conditions, prior sale, lease or withdrawal from market without notice. Broker further has not made and shall not make any warranty or representation as to the condition of the property nor the presence of any hazardous substances or any environmental or other conditions that may affect the value or suitability of the property.

1300 West Lynn, Suite 108, Austin, Texas 78703, (512) 474-2224 fax: (512) 474-4224

FOR LEASE

Retail Space
North Austin, Texas

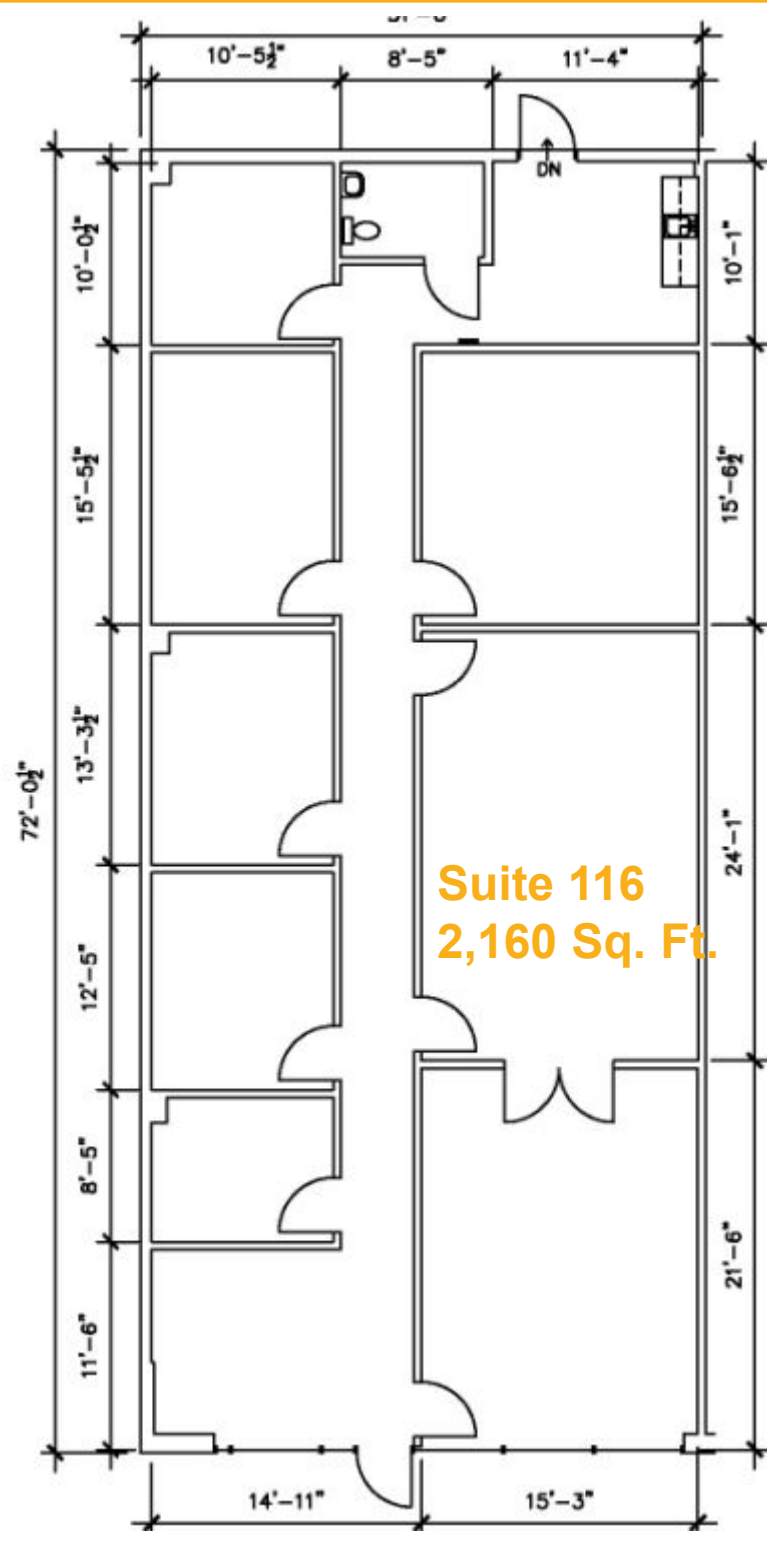


All information regarding this property is from sources deemed reliable, however, Broker has not made an independent investigation of these sources and no warranty or representation is made by the Broker as to the accuracy thereof and same is submitted subject to errors, omissions, change of price, rental or other conditions, prior sale, lease or withdrawal from market without notice. Broker further has not made and shall not make any warranty or representation as to the condition of the property nor the presence of any hazardous substances or any environmental or other conditions that may affect the value or suitability of the property.

1300 West Lynn, Suite 108, Austin, Texas 78703, (512) 474-2224 fax: (512) 474-4224

FOR LEASE

Retail Space
North Austin, Texas



Suite 116
2,160 Sq. Ft.