

# FOR LEASE



## Motor Bank Downtown, Austin



### 220 East 8th Street Motor Bank

**Address/Suite:** 220 East 8th Street in Downtown Austin, Texas

**Size/Availability:** The teller area is comprised of a 750 square feet and serves six motor bank lanes. One lane is served by a teller drawer, four lanes are served by tubes and one lane is set up as an ATM lane.

**Lease Rate:** \$12,500.00 per month plus NNN

**Signage:** Bank signage is available in multiple locations.

**Parking:** There is ample parking available in the attached garage. Parking spaces lease for \$145.00 per space per month.

**ROBERT R. HEMPHILL CO.**

COMMERCIAL REAL ESTATE

512-474-2224

[www.welaseaustin.com](http://www.welaseaustin.com)  
[roberthemphill@austin.rr.com](mailto:roberthemphill@austin.rr.com)

All information regarding this property is from sources deemed reliable, however, Broker has not made an independent investigation of these sources and no warranty or representation is made by the Broker as to the accuracy thereof and same is submitted subject to errors, omissions, change of price, rental or other conditions, prior sale, lease or withdrawal from market without notice. Broker further has not made and shall not make any warranty or representation as to the condition of the property nor the presence of any hazardous substances or any environmental or other conditions that may affect the value or suitability of the property.

1300 West Lynn, Suite 108, Austin, Texas 78703, (512) 474-2224 fax: (512)474-4224

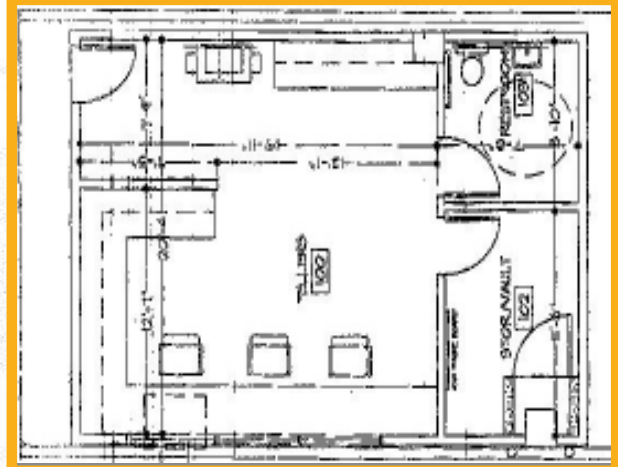
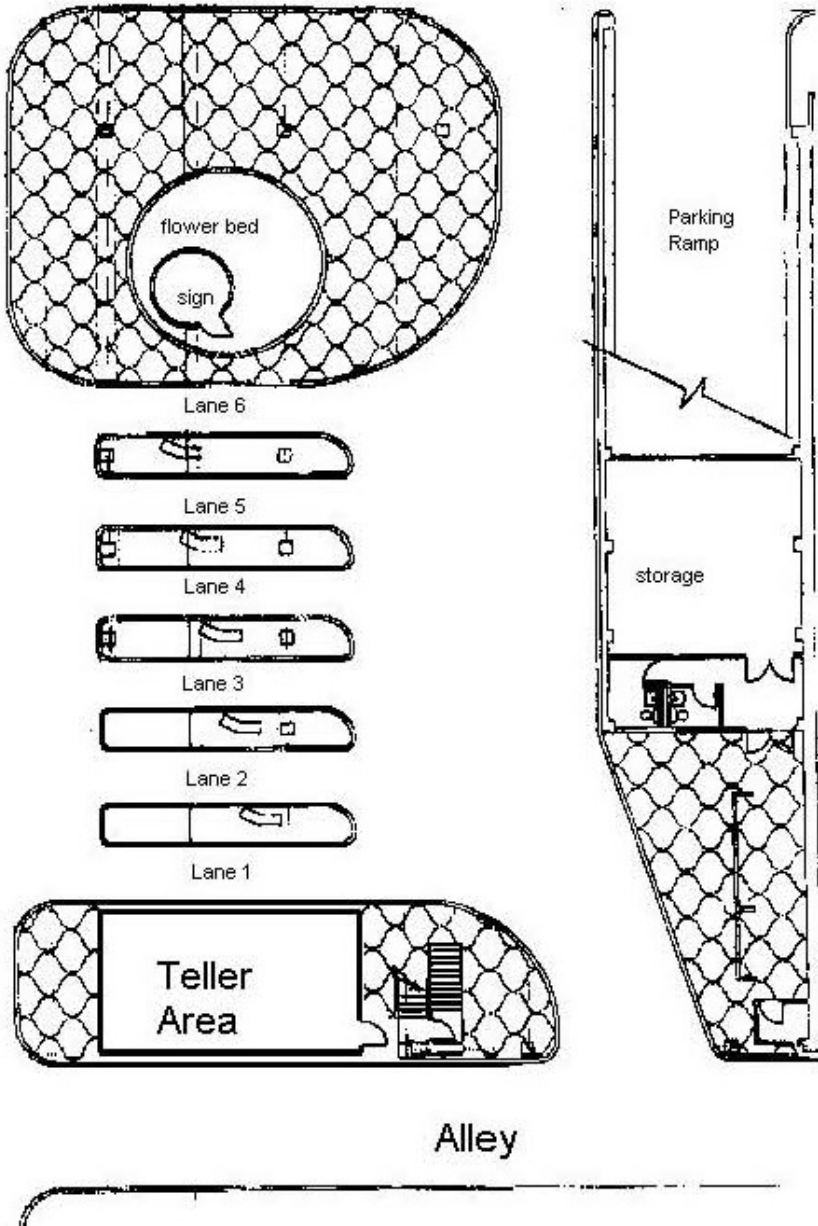
# FOR LEASE

220 East 8th Street

Motor Bank Downtown, Austin

CCIM

8th Street



**Size/Availability:** The teller area is comprised of a 750 square feet and serves six motor bank lanes. One lane is served by a teller drawer, four lanes are served by tubes and one lane is set up as an ATM lane.

ROBERT R. HEMPHILL CO.

COMMERCIAL REAL ESTATE

[www.welaseaustin.com](http://www.welaseaustin.com)  
[roberthemphill@austin.rr.com](mailto:roberthemphill@austin.rr.com)

512-474-2224

All information regarding this property is from sources deemed reliable, however, Broker has not made an independent investigation of these sources and no warranty or representation is made by the Broker as to the accuracy thereof and same is submitted subject to errors, omissions, change of price, rental or other conditions, prior sale, lease or withdrawal from market without notice. Broker further has not made and shall not make any warranty or representation as to the condition of the property nor the presence of any hazardous substances or any environmental or other conditions that may affect the value or suitability of the property.

1300 West Lynn, Suite 108, Austin, Texas 78703, (512) 474-2224 fax: (512) 474-4224