

Office/Medical Space

FOR LEASE



704 Wonsley Drive

Availability: 30 days

Location: 704 Wonsley Drive, one block North of, I-35 and Hwy 183 in North Austin.

Size: Suites sizes available 500, 612, 1,376, and 3,630 sq ft.

Lease Rate: First year rate is \$16.00 per sq. ft. NNN.

Parking: 3.7 spaces per 1,000 sq. ft, surface/covered

ROBERT R. HEMPHILL CO.

COMMERCIAL REAL ESTATE

512-474-2224

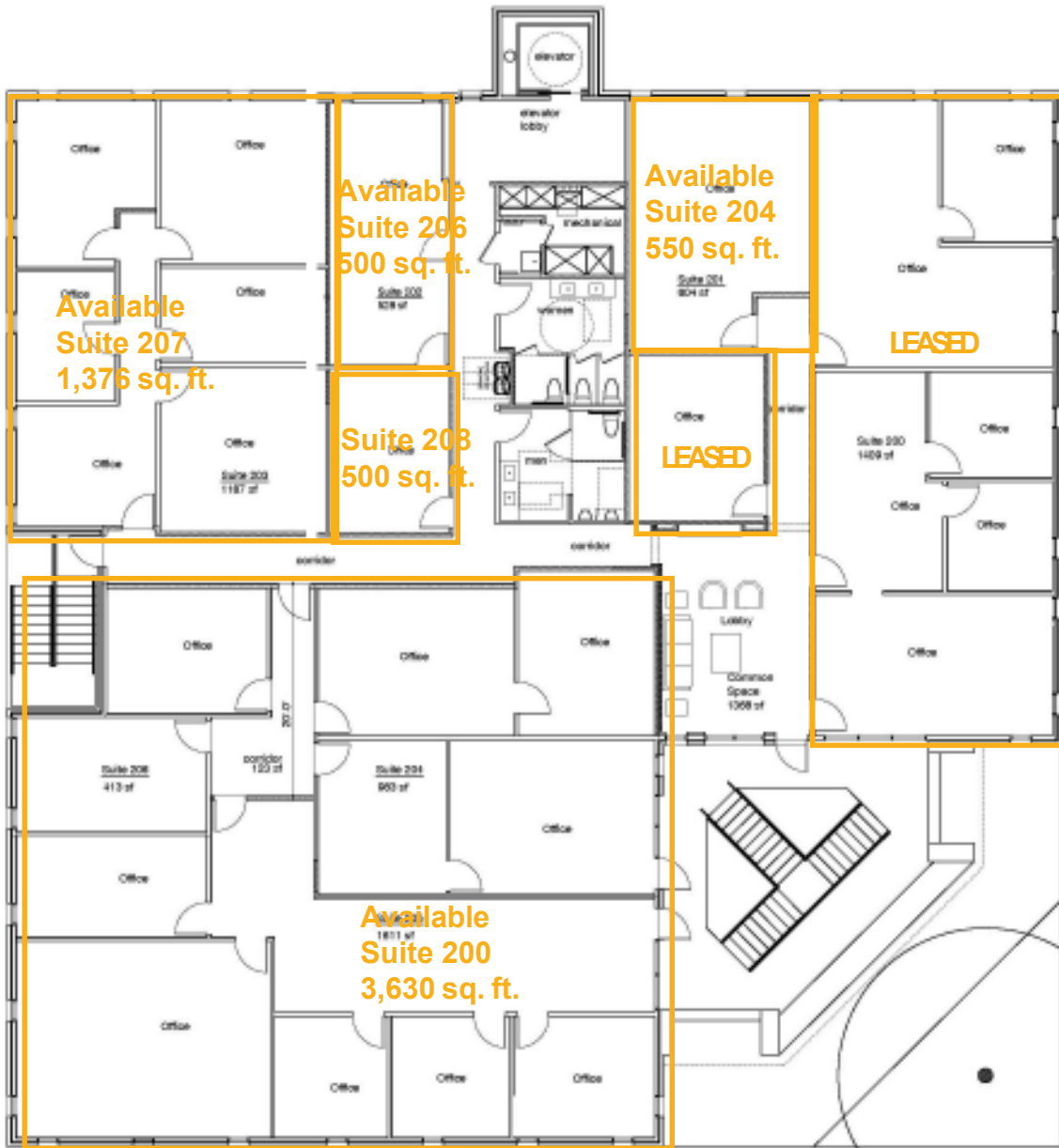
roberthemphill@austin.rr.com

<http://www.weleaseaustin.com>

All information regarding this property is from sources deemed reliable, however, Broker has not made an independent investigation of these sources and no warranty or representation is made by the Broker as to the accuracy thereof and same is submitted subject to errors, omissions, change of price, rental or other conditions, prior sale, lease or withdrawal from market without notice. Broker further has not made and shall not make any warranty or representation as to the condition of the property nor the presence of any hazardous substances or any environmental or other conditions that may affect the value or suitability of the property.

1300 West Lynn, Suite 108, Austin, Texas 78703, (512) 474-2224 fax: (512) 474-4224

FOR LEASE



704 Wonsley Drive

All information regarding this property is from sources deemed reliable, however, Broker has not made an independent investigation of these sources and no warranty or representation is made by the Broker as to the accuracy thereof and same is submitted subject to errors, omissions, change of price, rental or other conditions, prior sale, lease or withdrawal from market without notice. Broker further has not made and shall not make any warranty or representation as to the condition of the property nor the presence of any hazardous substances or any environmental or other conditions that may affect the value or suitability of the property.

Office/Medical Space

FOR LEASE

512-474-2224



704 Wonsley Drive