



FOR LEASE Office, Downtown Austin



San Jacinto Building, 221 East 9th Street

Address: 221 East 9th, Suite 409

Size: 1,398 Rentable Square Feet.

Availability: 30 Days

Lease Rate: \$17.50 per rentable square foot gross year on,

Parking: Parking spaces lease for \$110.00 per space per month.

ROBERT R. HEMPHILL, CCIM

COMMERCIAL REAL ESTATE

512-474-2224

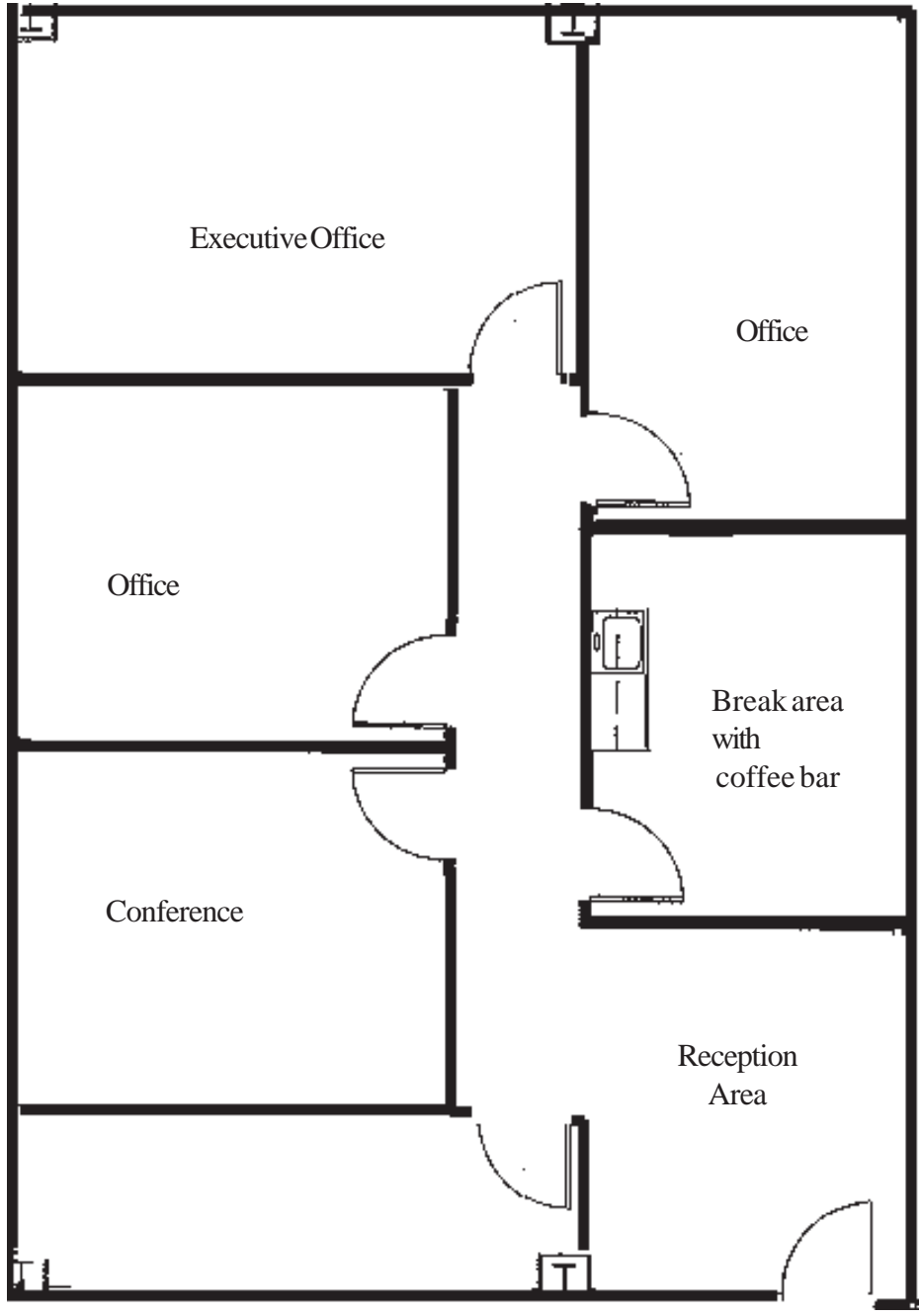
roberthemphill@austin.rr.com

All information regarding this property is from sources deemed reliable, however, Broker has not made an independent investigation of these sources and no warranty or representation is made by the Broker as to the accuracy thereof and same is submitted subject to errors, omissions, change of price, rental or other conditions, prior sale, lease or withdrawal from market without notice. Broker further has not made and shall not make any warranty or representation as to the condition of the property nor the presence of any hazardous substances or any environmental or other conditions that may affect the value or suitability of the property.

1300 West Lynn, Suite 110, Austin, Texas 78703, (512) 474-2224 fax: (512) 474-4224



FOR LEASE Office, Downtown Austin



ROBERT R. HEMPHILL, CCIM

COMMERCIAL REAL ESTATE

All information regarding this property is from sources deemed reliable, however, Broker has not made an independent investigation of these sources and no warranty or representation is made by the Broker as to the accuracy thereof and same is submitted subject to errors, omissions, change of price, rental or other conditions, prior sale, lease or withdrawal from market without notice. Broker further has not made and shall not make any warranty or representation as to the condition of the property nor the presence of any hazardous substances or any environmental or other conditions that may affect the value or suitability of the property.

1300 West Lynn, Suite 110, Austin, Texas 78703, (512) 474-2224 fax: (512) 474-4224